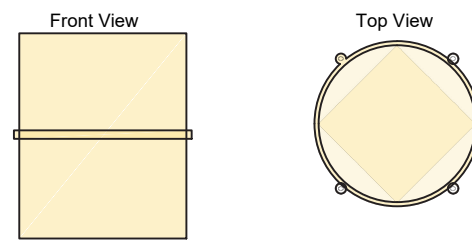




199 CONSTITUTION AVE. SUITE 7
PORTSMOUTH, NH 03801
(603) 319-8815

090 / 091 TEKMAR SENSOR

The Snow/ice Sensor Socket 091 is designed to provide a mounting solution for the Automatic Snow/ice Sensor 090 or 094. It is intended to be installed directly into a concrete slab when the slab is poured, so that the 090 or 094 can be installed into it once dry.



AWG	Max. Added Length (feet)	Total combined feet, including factory 65'
10	2787	2852
12	1760	1825
14	1103	1168
16	692	757
18	435	500
20	276	341

Special Requirements

Must be mounted on a level slope, so that 090/094 sensor is flush with slab surface.

Maximum Wire Lengths for Snow / Ice Sensor 090

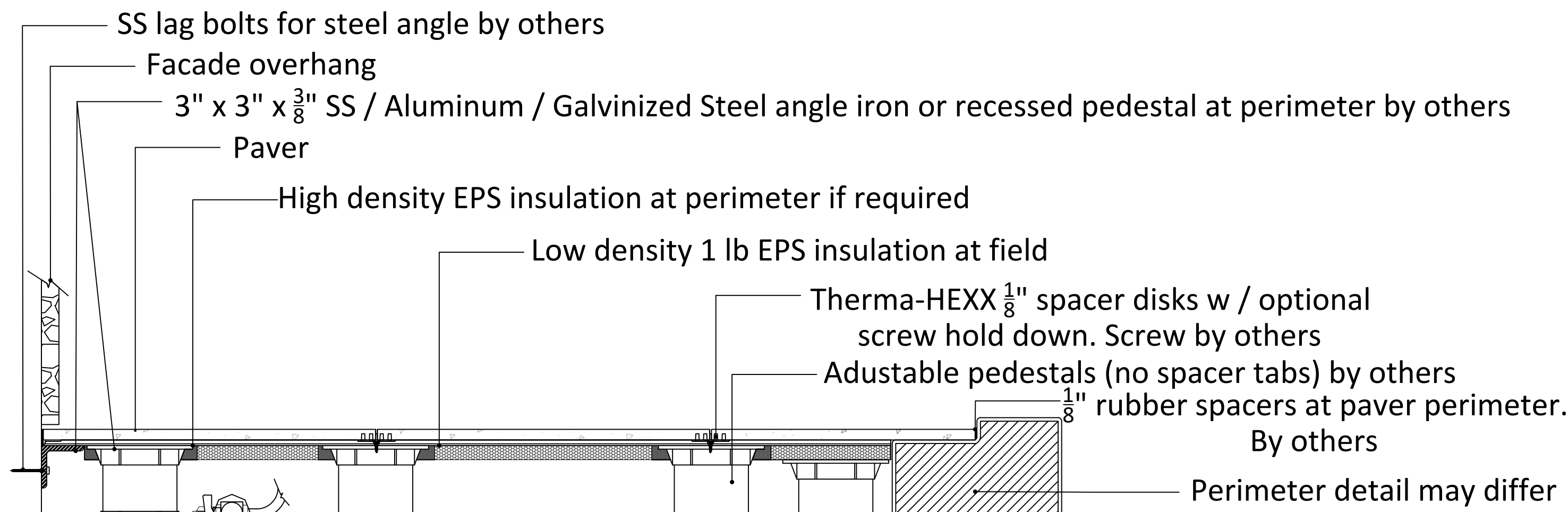
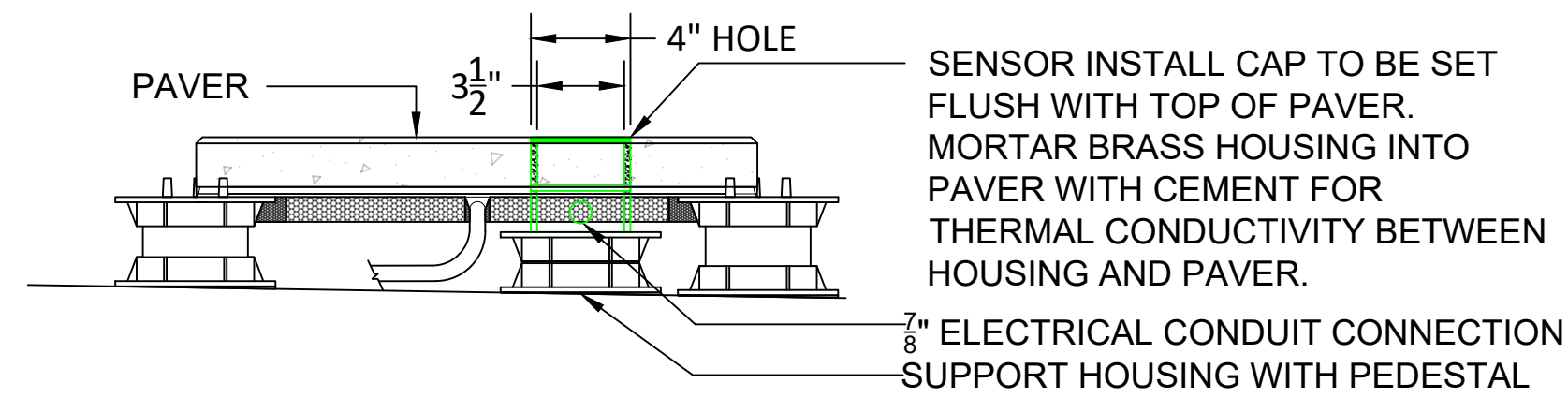
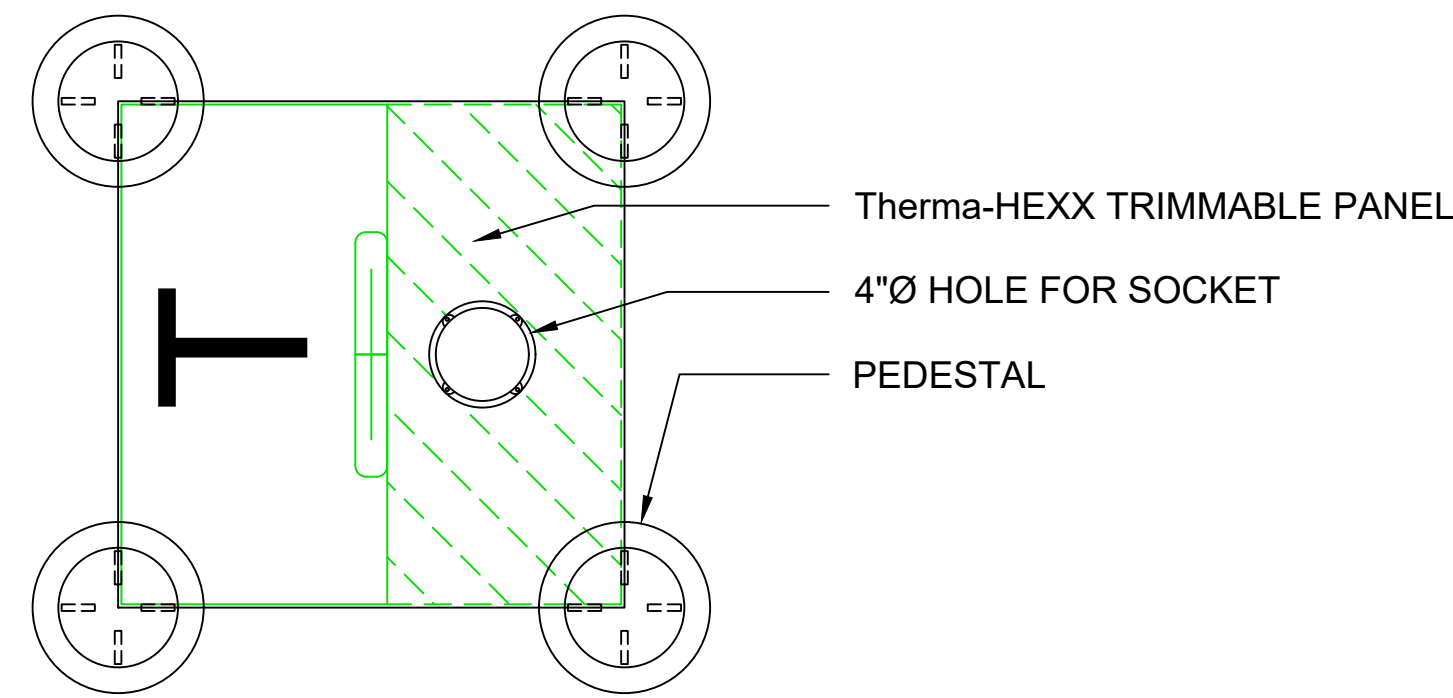
The following table shows the maximum wire length for the Snow / Ice Sensor 090. The "Max Added Length" column shows the additional length of wire that can be added to the 090's existing 65'.

All splices must be:

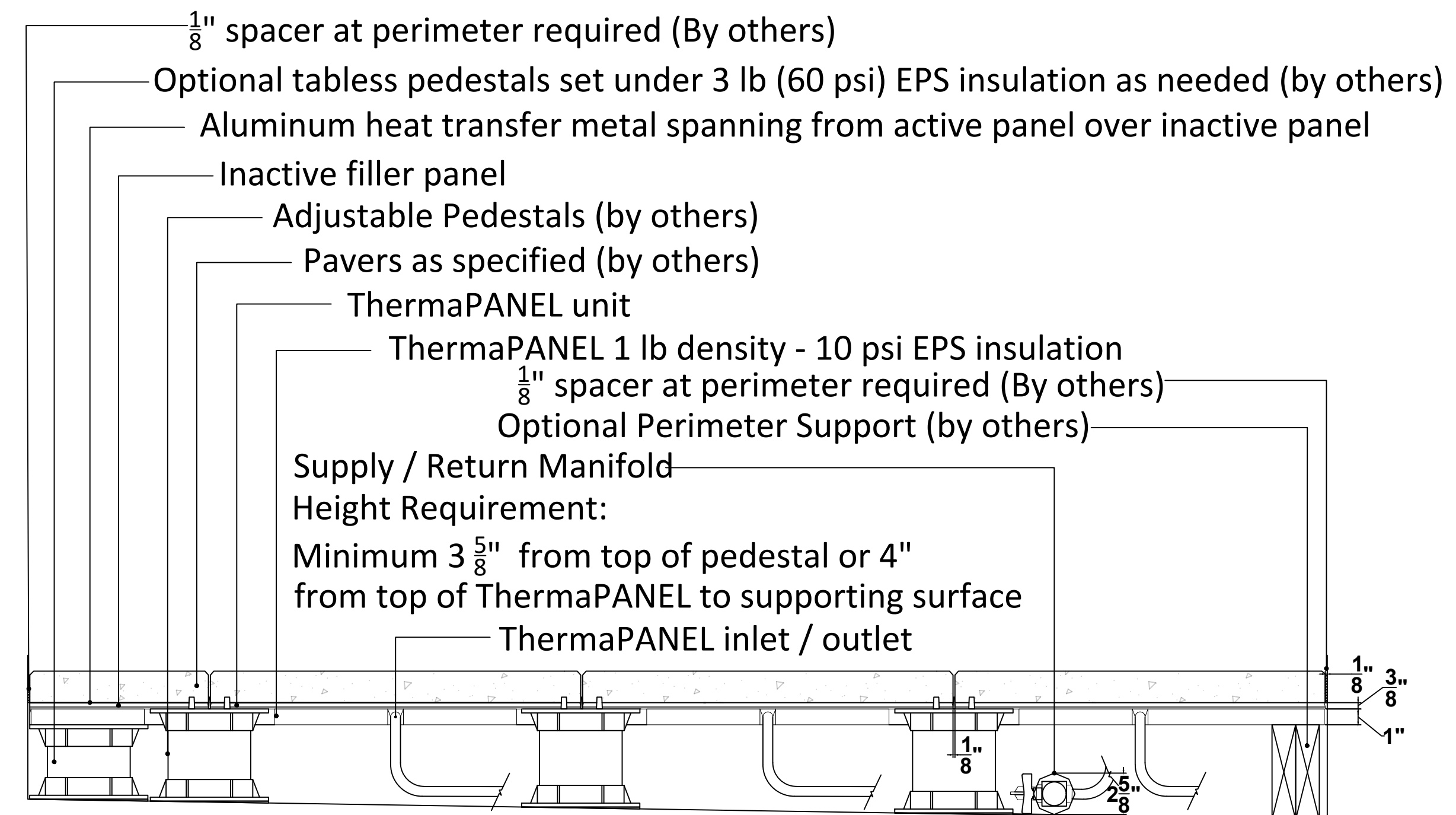
- soldered individually
- heat shrunk individually
- located in a dry junction box, preferably inside the building

For a more robust connection and long term signal quality, it is recommended to heat shrink the cable jacket.

AWG (solid copper wire)	Max. Added Length (feet)	Total combined feet, including factory 65'
10	2787	2852
12	1760	1825
14	1103	1168
16	692	757
18	435	500
20	276	341



Supply / Return Manifold
Height Requirement:
Minimum 3 5/8" from top of pedestal or 4" from top of ThermaPANEL to supporting surface



PROJECT
PROJECT ADDRESS

PROJECT:

REV	DESCRIPTION	DATE	BY

DRAWN BY:	CHECKED BY:
DATE: 00/00/21	SCALE: N/A

SHEET:

2.0

TITLE:

PEDESTAL MOUNT SECTIONDETAILS